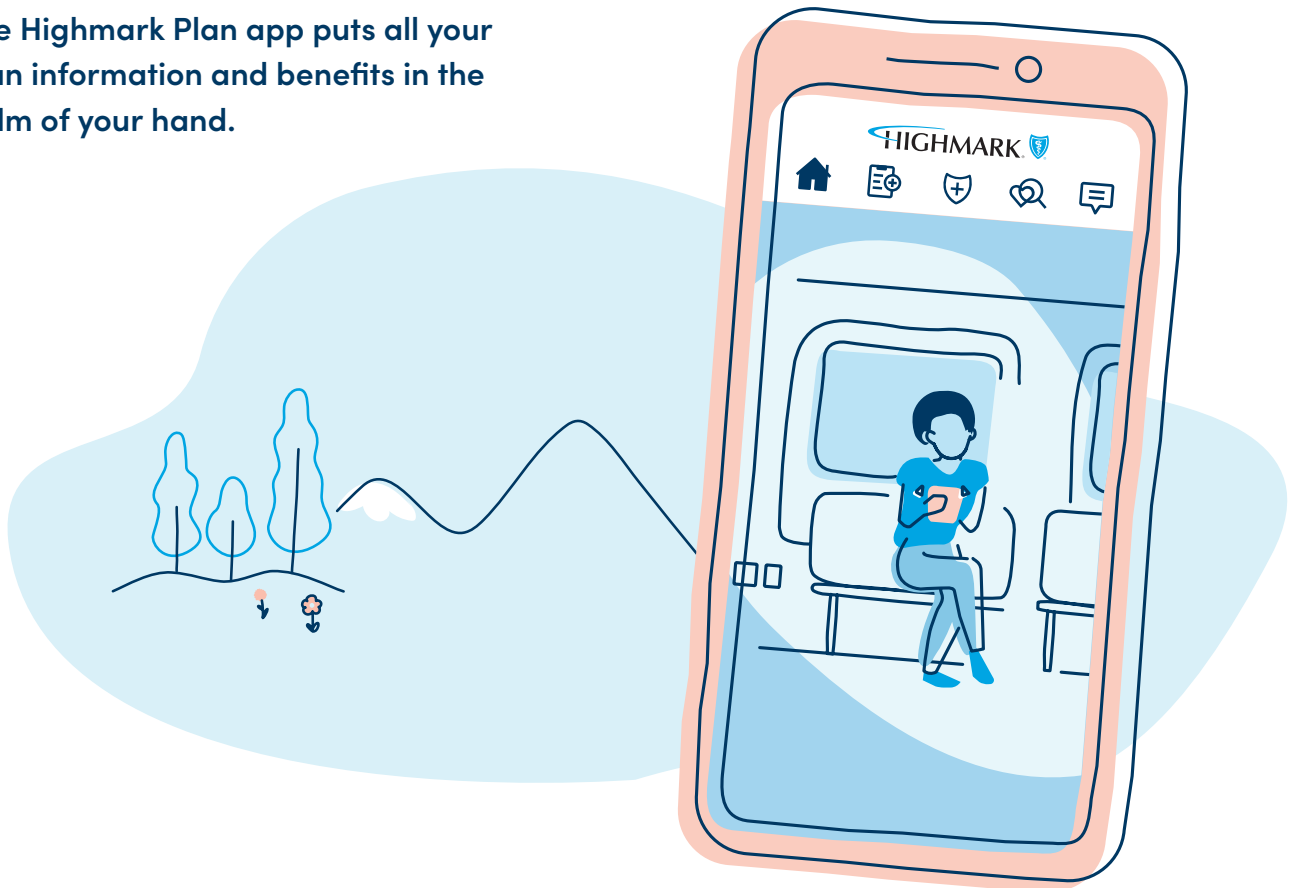




The most convenient way to manage your plan on the go.

The Highmark Plan app puts all your plan information and benefits in the palm of your hand.



Through the app, you can:



Access your virtual member ID card any time.



See recent claims activity.



Find in-network care or compare costs of procedures.



View covered family members' plan information.



Get answers to benefit questions.



Use fingerprint or face recognition for quick, secure sign-in.



Download the Highmark Plan app today.

Sign up right on the app, or use your same login info from the member website if you already have an account.

